



NOTICE BOARD

School Lunches

Our school menu is based on a three week cycle. Children are able to choose a hot meal or jacket potato each day. There is also a deli option on Tuesday and Thursday. If you would like to view the food choice on offer, you will find the menus on our school website, or alternatively pop into the school office and we can provide you with a copy. Next week (week commencing 24.9.17), we are on Week 1.

If you send your child into school with a packed lunch we would be grateful if you do not include any nuts, peanut butter or houmous as some of our children have severe allergies to these products. Small foods such as grapes, olives and cherry tomatoes should be cut in half. We also ask that fizzy drinks, chocolate bars or sweets are not included in children's packed lunches.

Playground

Following several conversations and emails to the Local Authority about the state of our playground we have been promised turf for the areas shielded by the orange fencing this week. Grass at last! Another exciting playground project has been scheduled for half-term. We are having a new play area installed where the wooden train is placed in the playground. I am sure the children will be delighted with it.

School bags

Ideally, children should have a purple Black Horse Hill Infant School bag because it is easily stored in children's trays and readily opened. Teachers are reporting that children are struggling with other types of bags to get reading books, letters and other items out quickly plus they take up a lot of space on corridor pegs. I would be grateful if you would consider if your child doesn't already have one, using a purple school bag.

Parking

For the safety of our children, parents/carers are asked to park safely at all times when dropping off and collecting children. Please be respectful to the local residents and avoid parking across their drives. Parking in the staff car park is not permitted.

Audio/Vision Screening

All children in Foundation 2 will have their hearing and vision checked by the NHS. Consent letters will be sent out to all children.

School Nurse

We have a school nurse allocated to our school. The school nurse is able to talk to you about any medical concerns you have about your child. Speak to a member of school staff if you would like us to make a referral to the school nurse.

Illness

If your child is unwell please contact the school office before 9.30am to let us know why they are unable to attend school that day. Please be aware that we have guidance to say that following a sickness, vomiting or diarrhoea bug children should not return to school until 48 hours have lapsed since the last episode.

Medicines

Parents/carers need to complete a consent form (available from the school office) for all medicines administered in school. Please note that apart from continuous daily medication, only medicine which requires four or more doses a day will be given. Parents/carers must take responsibility for collecting the medicine at the end of the day.

Bikes and Scooters

We encourage our children to walk, cycle and scoot to school. However, once in the school grounds we ask that children refrain from cycling or scooting in the playground as there are too many people to manoeuvre around safely. Bikes and scooters may be stored in the cycle rack at the top of the playground but I would advise you to lock them up.

Wooden Train/ Wooden Hut

The wooden train situated in the playground is for the children to sit on. Please do not allow your children to climb on this train. Our Wooden Hut is out of action at the moment due to the structure being slightly unstable due to a rotten beam. We are awaiting repairs. Until then, children should not use it.

Baby Play

Children's Centre Services are currently running a Baby Play session from 9.30-10.30am in our Annexe (the old West Kirby Children's Centre building) on a Wednesday morning. For more information contact Pensby Children's Centre on 666-4819.

Dogs on site

We do not allow dogs to enter the school site even if they are being carried by their owner.

Website

To visit our website please go to www.blackhorsehillinfant.co.uk

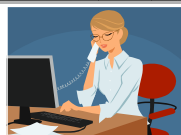
Contact us

Tel: 0151 625 5238

Fax: 0151 625 9041

Email:

schooloffice@blackhorsehill-infant.wirral.sch.uk



September 2018

Black Horse Hill Infant School

Dear Parents and Carers,

I would like to begin my newsletter by welcoming all our families both old and new back to school. It is always a delight to see the children return to school refreshed and excited about the year ahead. We look forward to working in partnership with you over the forthcoming year. Do remember, like you, we want the very best for all our pupils and if you have any concerns about your child don't hesitate to contact us. The best time to speak to the teachers is at the end of the school day when they have seen the children out or alternatively you can contact the school office by phone or email to arrange an appointment.

J. Morris

DATES FOR YOUR DIARY



SEPTEMBER

Wed 19th	Foundation 2 Curriculum Evening (6pm)
Wed 26th	Year 1 Curriculum Evening (6pm)
Thurs 27th	Year 2 Curriculum Evening (6pm)
Fri 28th	FOBHHS Back to School Disco (5.30-7pm)
OCTOBER	
Wed 3rd	Individual photographs
w/c 15th October	Parent/Teacher Meetings
Fri 19th	Non-Uniform Day (£1 voluntary donation to school fund) School closes for half-term holiday (3.05pm)
Mon 29th	Children return to school (8.50am)
Wed 31st	Fun Food Chef (Yr2)

NOVEMBER

Mon 5th	F2, Yr1 & Yr2 Flu Vaccinations (nasal spray)
Tues 6th	F2 Phonic /Reading Workshop for parents (1.30pm)
Fri 9th	FOBHHS Mad Hair day (Information to follow)
Fri 16th	Children in Need Charity event (Non-Uniform—Wear Spotty clothes)
Fri 23rd	Non-Uniform (Donation of pre-loved books/toys)
Saturday 24th	Christmas Fair at BHHIS (1-3pm)
w/c 26th	Science week
Thurs 29th	Full Governing Body Meeting (6pm)

Please note a list of events for the school year are listed on our school website.

Staffing for 2018-2019

Class	Teacher	Teaching Assistant
Foundation 1	Mrs Honeybourne	Mrs Boardman
Foundation 2	Mrs Lucan	Mrs Peddie Miss Barnes
Foundation 2	Mrs Eccles (Mon-Wed) Mrs Bancroft (Wed-Fri)	Mrs Myers
Year 1	Mr Young	Mrs Underwood
Year 1	Mrs McLeod	Mrs Thompson
Year 2	Mrs Fitzgerald	Mr Dagnall (am) Mrs Costello (pm)
Year 2	Miss Murphy Miss Wilson (Teaching student)	Mrs Gill

Miss Cross is our Learning Mentor and she supports children across the school. Please contact school if you would like to discuss any social, emotional or behaviour concerns you have about your child at home or school with Miss Cross.

It'll be fine with no line!

Many of you have noticed (and commented favourably) that we have been trialling a new way for the children to come into school in the morning. Instead of the bell ringing at 8.50am school has been open from 8.40am and children have walked into school as they arrive. There are many advantages to this staggered entry including less traffic congestion and fewer incidents before school but perhaps the most important is that all children are having a calm start to the school day. So, following a successful trial we will continue with this procedure. School doors will open at 8.40am (8.45 for F1) and they will be closed at 8.50am. Registration will take place at 8.55am.

Keeping children in our school safe is of paramount importance to us and I appreciate your co-operation in adhering to the following guidelines at the beginning of the day:

- Ensure your child is inside the school building before leaving the playground. Once your child is in the school building staff will take responsibility for your child's safety.
- Try to avoid speaking to the classteachers at the beginning of the school day. Instead ask to speak to them at the end of the day. If the matter is urgent please telephone school and arrangements will be made for you to speak to a member of school staff.
- Report to the main office if you need to come into the school building.
- Let us know if your child is going home with somebody different e.g another parent/carer by writing a note to the classteacher.

If you have any concerns about the safety or welfare of a child please speak to Mrs Morris who is the Safeguarding lead in school.

Wildlife Garden

A big thank you to the FOBHHS team who have transformed an unused area into a wildlife garden for the children.



Golden Rules

At Black Horse Hill Infant School, the children follow the Golden Rules to make our school a safe and happy place to be. If children follow the Golden Rules all week they are rewarded with Golden Time. Here are our Golden Rules:

Always keep hands, feet and objects to yourself
Always be kind and helpful
Always work hard
Always look after property
Always listen to people
Always tell the truth

Super Golden Rule: Always do what a grown-up in school asks first time

If your child has not followed any of the Golden Rules a letter will be sent home and they will miss some Golden Time. We will invite parents/carers into school of any child who is repeatedly missing Golden Time to identify ways we can improve behaviour. For further information please refer to our Behaviour/Assertive Discipline Policy which is available on the school website.

Celebration Assembly

As part of our Behaviour/Assertive Discipline Policy, on Wednesdays, we hold a special assembly to celebrate children's achievements at home and school. At this assembly children are awarded special trophies for kindness, hard work or for setting a good example to others in the hall. Please can we ask that if your child is awarded a trophy that they return it to school on a Monday or Tuesday of the following week. If your child has been awarded a certificate for swimming, gymnastics, dancing, football or any other activity, please bring them to school on a Wednesday so that they can show the rest of the school.



Attendance and Punctuality

Next week you will receive our "Attendance Matters" leaflet which outlines how important it is for children to attend school. I would also like to remind parents/carers that, following a new government policy, holidays cannot be authorised in term times. Authorisation will only be given when the circumstances for requesting the absence from school are exceptional.

May I take this opportunity to convey to parents/carers that punctuality is also very important and children should be in school for registration at 8.55am. Repeated lateness has a significant impact upon children's reading skills because our Letters and Sounds phonics programme is taught first thing each morning. If children are late on ten or more occasions a Fixed Penalty Notice may be issued by the Local Authority and the Education Social Welfare Officer will become involved.

Uniform

Thank you, the children look very smart in their school uniforms. I do feel it is important that our school uniform is adhered to. Variations in colours of cardigans, jumpers and footwear can lead to children wearing inappropriate attire for school and unsuitable footwear may compromise their safety. I also know that if children are wearing "alternative" clothing it can be difficult for other parents/carers to reinforce that school uniform needs to be worn e.g. "but ———wears a pink cardigan to school." Jewellery, including earrings, should also not be worn. Extreme hairstyles/hair accessories are also to be discouraged. As many of you will be aware our "Lost Property Box" is often overflowing with clothing. Please ensure that all clothing is labelled, including P.E. kits, so that property can be returned to its rightful owner. I would also request that every child has a water bottle in school. Learning is thirsty work!